

EPICS User Interfaces

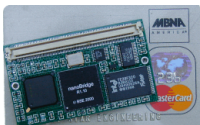
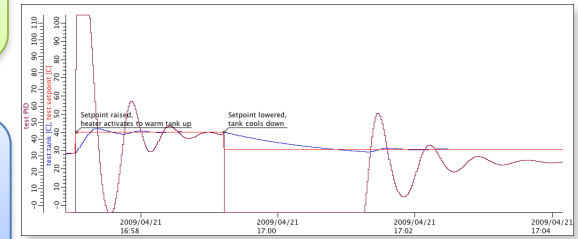
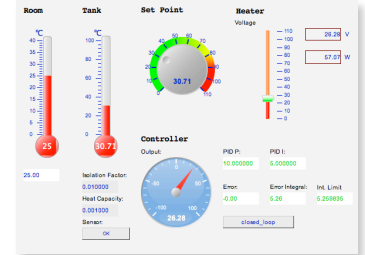
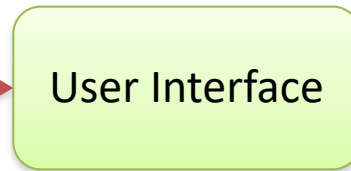
Kay Kasemir,
ORNL/SNS
Jan. 2019

EPICS: Distributed System

Servers



Clients



Over the years



Over the years



Since ~1990:

```
record(ai, "my_record")
{
  field(DTYP, "MyDevice")
  field(INP , "@channel2")
  field(SCAN, "1 second")
  ...
}
```

More supported platforms:
vxWorks, RTEMS, Linux, OS X, Windows, ..
68000, Intel, PPC, Arm, ..

1. edd/dm 198x
2. medm 199x
3. edm 200x
4. CS-Studio 201x
2009: BOY
2017: Display Builder

Also:
tcl/tk/ca,
python/qt/ca, ..

Limited compatibility.

Example: ORNL/SNS

- Accelerator
 - EDM displays
 - CS-Studio Data Browser
 - CS-Studio Alarms
 - CS-Studio MPS Bypass Table
- Beam Lines
 - CS-Studio Display Builder (some older BOY)
 - CS-Studio Data Browser
 - CS-Studio Alarms (IHC)
 - CS-Studio Scan UI