

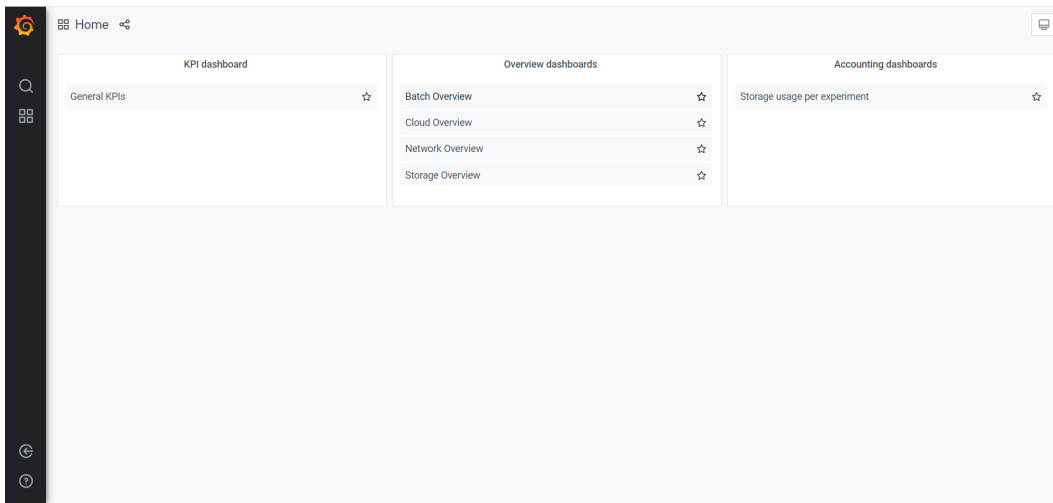
# Monitoring

## Monitoring with Grafana

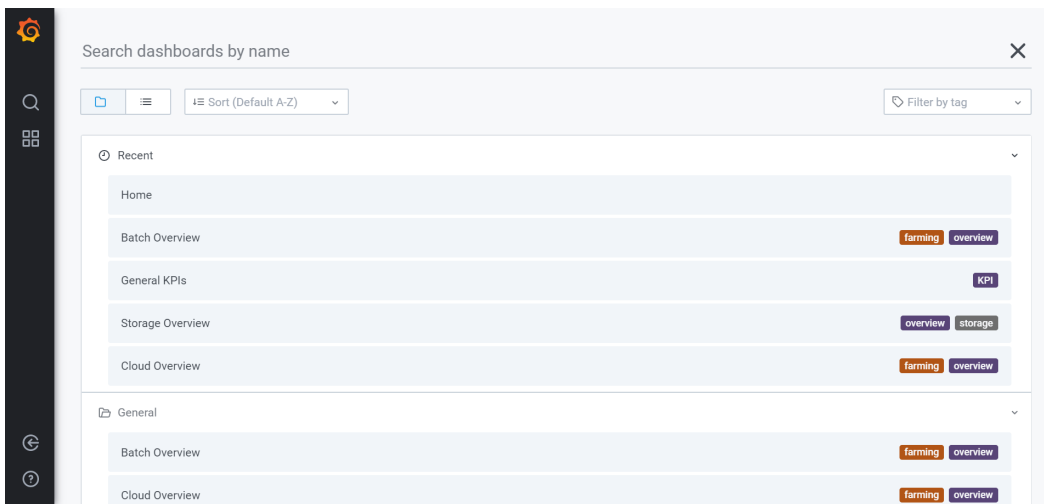
Experiments at INFN-Tier 1 use Grafana as a monitoring service. Grafana is a useful dashboard application with a web interface, providing many types of graphs for different services, such as Storage, Farming, and Facility overview.

Grafana can be found here: <https://t1metria.cr.cnaf.infn.it/d/MAXpbtVMk/home?orgId=18>.

On this page it's possible to select which type of resource to monitor and then look for the desired experiment.

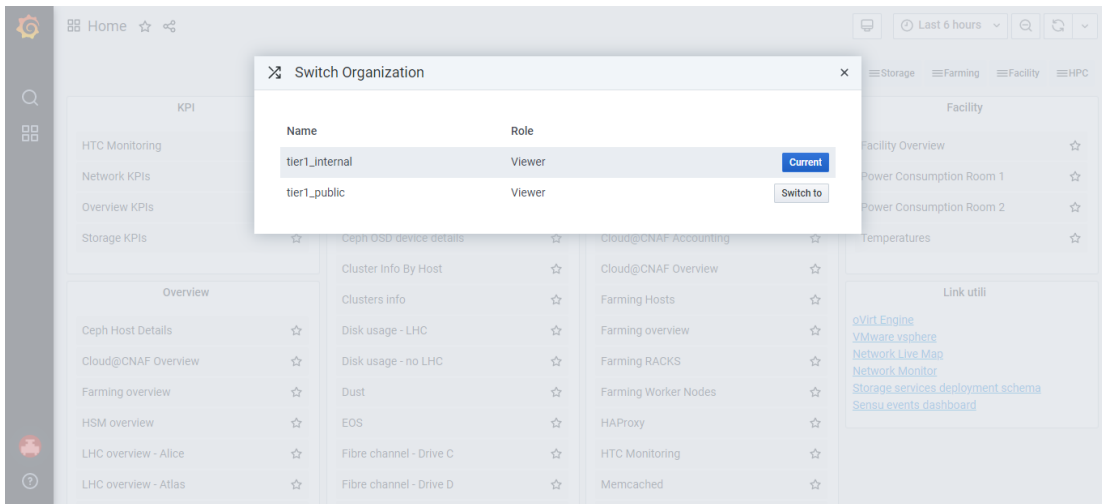


The same actions are feasible from the "*Home*" button, which opens the following menu:

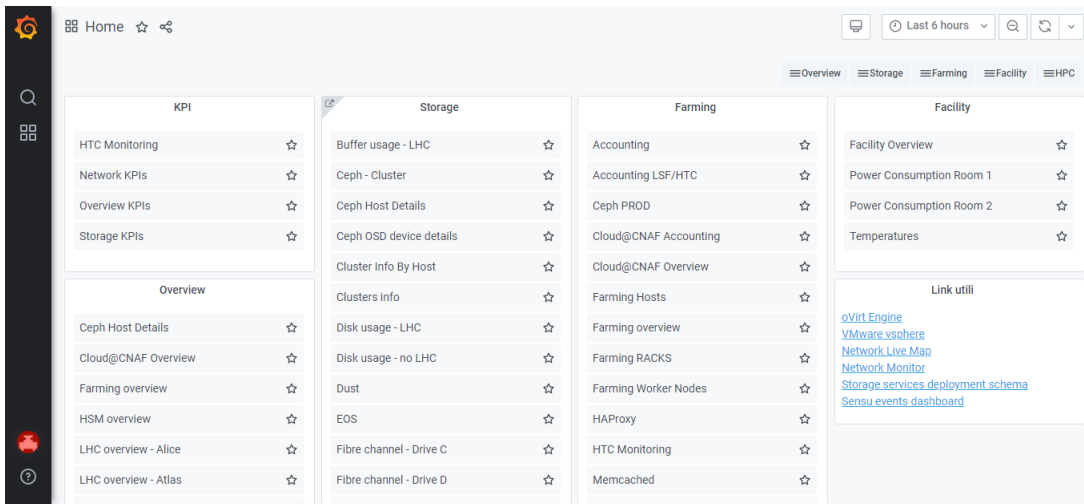


**NB:** If some script fails to get data it results in a zero record, which doesn't mean that the resource is unavailable.

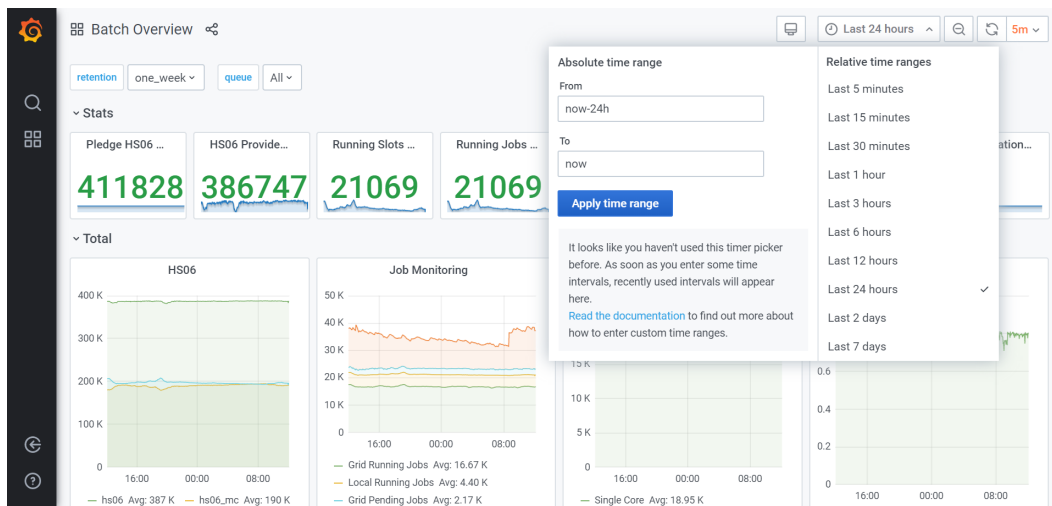
Once you are logged in the Grafana Homepage, from the bottom left button you can switch the view from a "tier1\_public" into an "tier1\_internal" Organization:



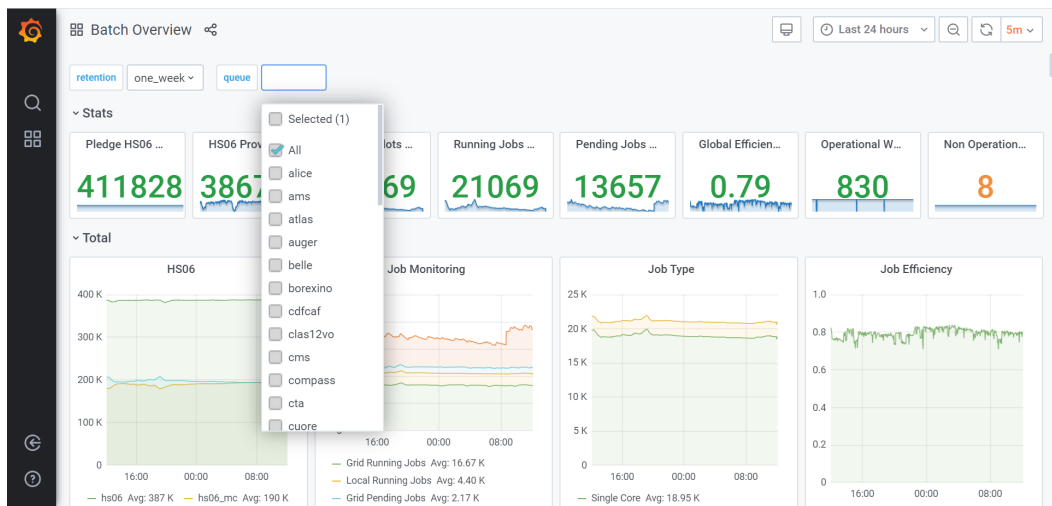
At this point you get the complete view of the Grafana dashboard:



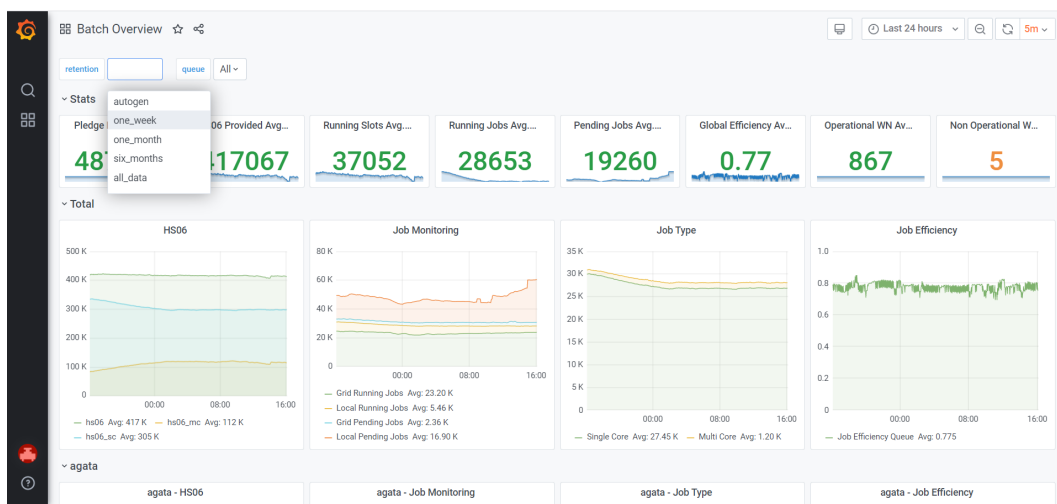
From here you can select the desired service and browse through different options. For instance, in the top right corner you can change the time interval to watch:



and, selecting one of the "per queue" views, you can choose which ones to show:



You can also select the desired retention, by clicking on the top left corner:



Moreover, disk situation can be checked here: <http://www.cnaf.infn.it/~vladimir/gpfs>.