

# Various How-tos

## Add external storage (cloud, ...) using RCLONE

- If not done already, install rclone following [this instructions](#)
- You can now configure the access to one of the supported cloud storage (complete list [here](#))
  - e.g. if you want to have local/posix access to your google drive files you should follow [this guide](#)
    - pay attention to answering no when prompted with "Use auto config?", especially if you are running on a remote host
- You can now mount locally any of the supported cloud storage using rclone mount as shown [here](#)

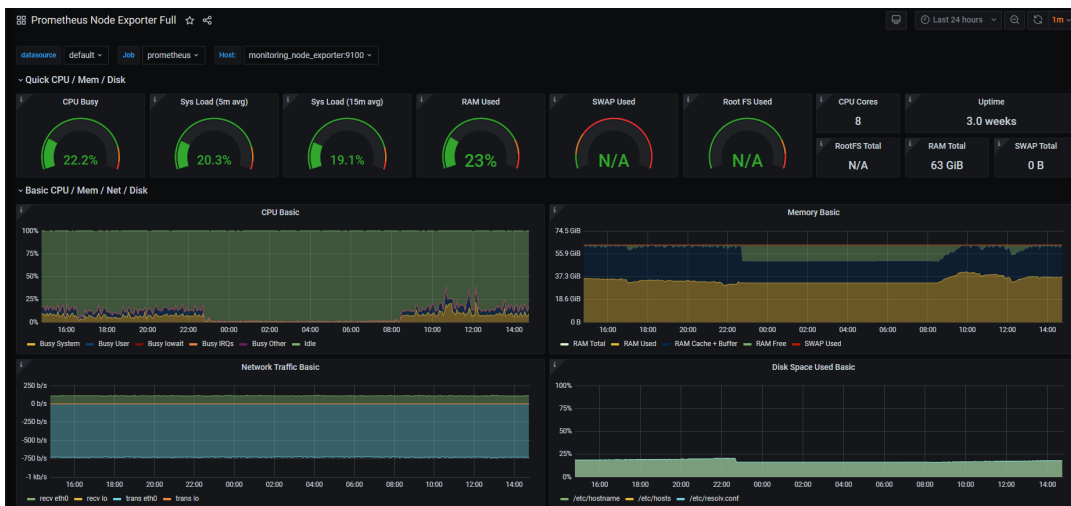
## Monitor the resources

**Target:** amministratori del deployment

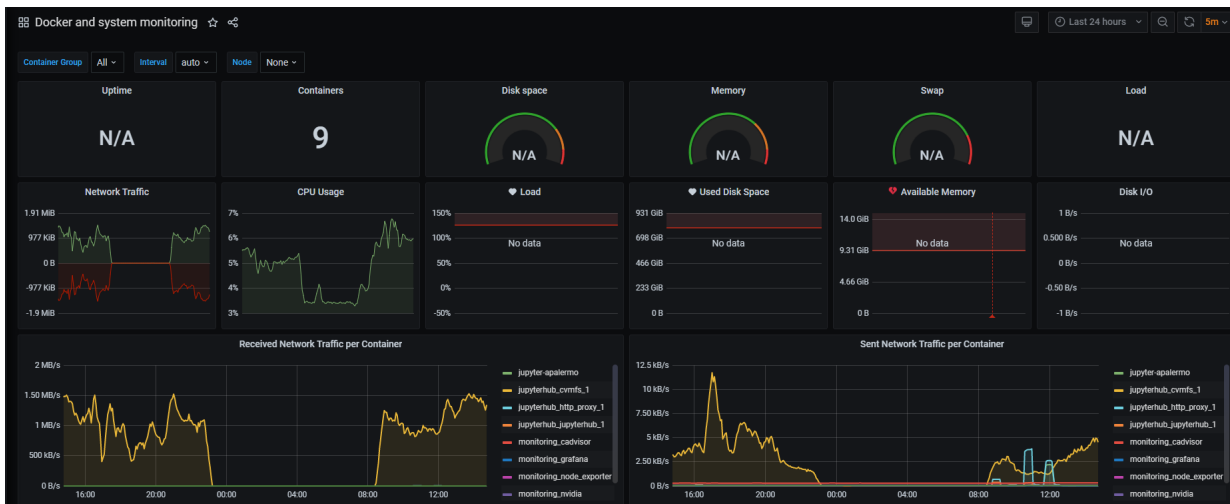
A monitoring page will be available for each deployment on the port 3000. The metrics are collected using Prometheus technology and then exposed through Grafana dashboards.

It will show, by default, 3 Grafana dashboards:

- VM level metrics: CPU, Memory, Network and many other



- Docker containers metrics: resource consumption by container mainly



- If a GPU is available, also a dashboard with GPU usage and temperature will be shown



Snapshot the VMs